

POLICING BEACH COMMUNITIES

San Diego Police Department

Northern Division

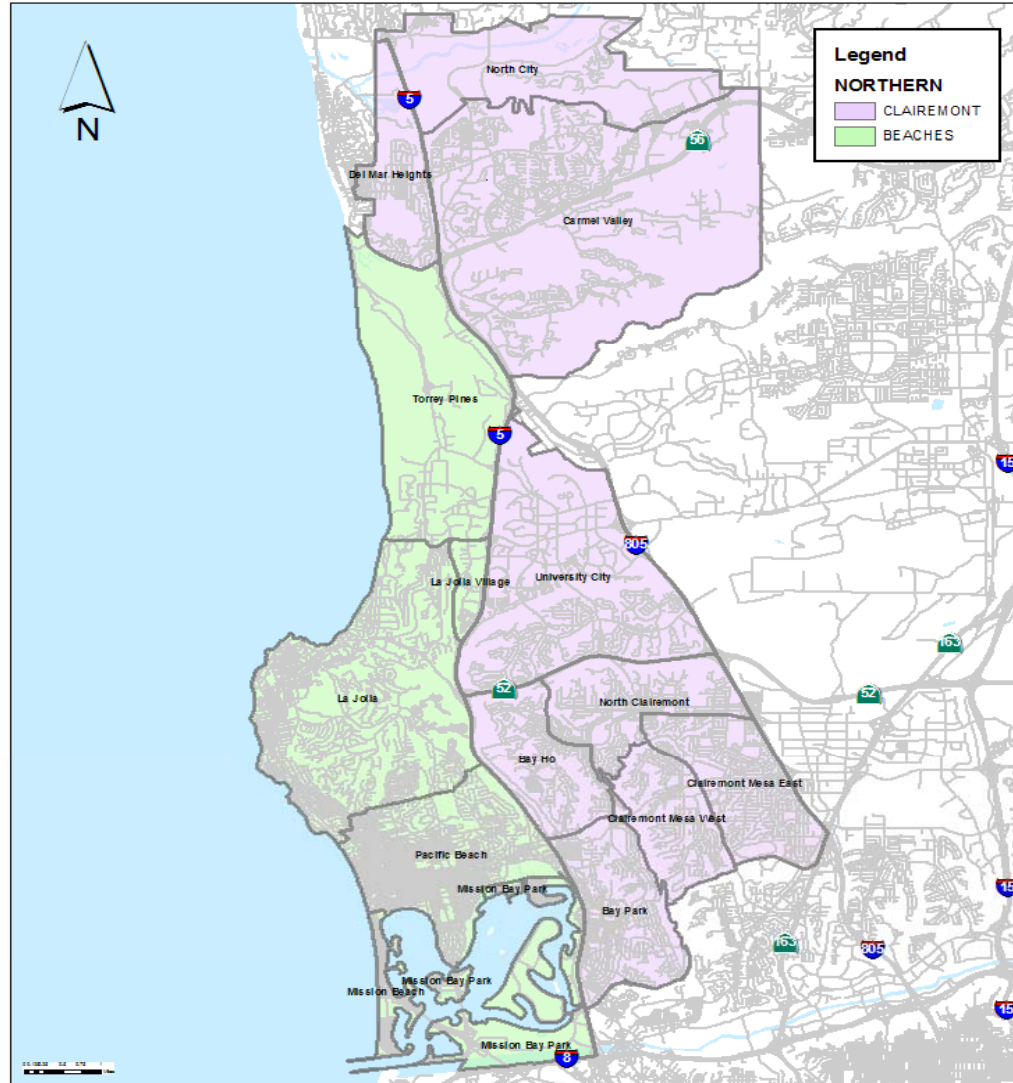
Captain Boyd Long, Commanding Officer

February 26, 2007

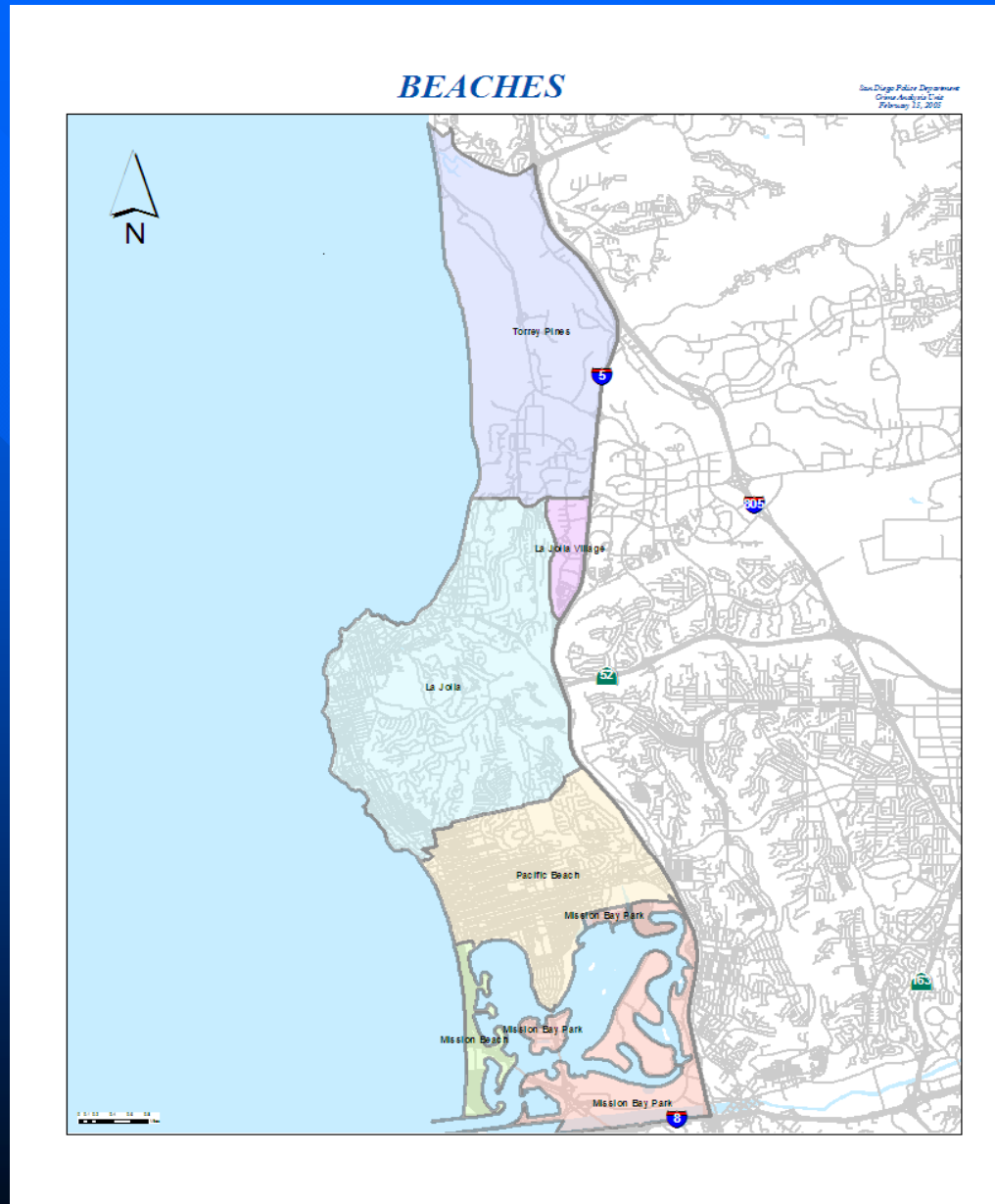
Northern Division

Northern (2005)

San Diego Police Department
Crime Analysis Unit
February 11, 2005



Northern Division – Beach Communities



Northern Division Population and Square Mileage

<u>Community</u>	<u>Population</u>	<u>Sq. Mileage</u>
Beach	87,582	22.85
Inland	168,962	41.85
Total	256,544	64.70

Population Source: 2004 estimates compiled for SDPD by SANDAG

Population and Square Mileage

Northern Division

Beach Communities

<u>Community</u>	<u>Population</u>	<u>Sq. Mileage</u>
Mission Beach	5,356	.59
Pacific Beach	41,621	4.40
Mission Bay Park	879	2.65
La Jolla	29,725	8.39
La Jolla Village	5,584	.55
Torrey Pines	4,417	6.27

Population Source: 2004 estimates compiled for SDPD by SANDAG

Northern Division Patrol Staffing

Total Assigned Officers	137 (out of 880)
Total Available Officers	116 (out of 757)
% Strength	89%
Beach Teams	8 officers + 2 sergeants
Harbor Unit	5 officers + 1 sergeant

Source: SDPD Operational Support

Responding to House Parties

Why a Division-wide coordinated response?

Total # of Calls for Service

Party or Noise Related

Northern Division

2005	4,546
2006	4,593

+1.03% change

Total Party and Noise Calls for Service, 2000-2005

Total Party and Noise Calls for Service

	2000	2001	2002	2003	2004	2005
Mission Beach	1,027	810	793	704	546	532
Pacific Beach	2,553	2,648	2,364	2,254	2,358	2,160
Mission Bay Park	0	0	0	0	0	0
Ocean Beach	787	803	718	752	769	764
Citywide	25,211	23,480	22,493	21,128	21,613	21,506

What is CAPP?

Community Assisted Party Program

Designed to:

- ✓ reduce nuisance behavior at chronic party houses
- ✓ enhance the quality of life in residential communities by reducing neighborhood disruption caused by residents who host large or loud parties
- ✓ place tenants and owners on notice that future police response could result in civil penalties including cost recovery and administrative fees
- ✓ empower residents to utilize existing nuisance statutes to seek civil remedies through the courts

How Does a Residence Get Capp'd?

Satisfying any one of the following criteria could result in a CAPP designation:

- ✓ an alcohol-related arrest resulting from a party call
- ✓ 2nd police response to the same party within 24 hours
- ✓ 2nd police response to the same residence within 31 days for a party-related call
- ✓ citizen recommendation corroborated by supporting data

(858) 552-1717 to report an address for CAPP consideration

A Residence is CAPP'd. Now what?

- ✓ owner and resident are notified
- ✓ officers receive notification while enroute to a call that the address has been CAPP'd
- ✓ zero-tolerance enforcement posture
- ✓ cost recovery for 2nd response
- ✓ CAPP designation expires after one year and is attached to the property, not the tenant
- ✓ party/gathering = 5 or more persons

56.62(a)(2) SDMC Social Host Ordinance

Adopted by the San Diego City Council on April 18, 2006. Went into effect May 26, 2006.

It is unlawful for any person having control of any premises to knowingly host, permit, or allow a gathering to take place at said premises where at least one minor consumes an alcoholic beverage, whenever the person having control of the premises either knows a minor has consumed an alcoholic beverage or reasonably should have known that a minor consumed an alcoholic beverage had the person taken all reasonable steps to prevent the consumption of an alcoholic beverage by a minor...

56.62(a)(2) SDMC Social Host Ordinance

Definitions

Gathering – is a party, gathering or event where a group of three (3) or more persons have assembled or are assembling for a social occasion or social activity.

Minor – any person under twenty-one (21) years of age. Only one (1) has to be consuming alcohol.

Premises – any residence or other private property, place, or premises, including any commercial or business premises.

FBI – Uniform Crime Reporting Part I Offenses

Part I offense classifications include (in this particular order):

Criminal Homicide
Forcible Rape
Robbery
Aggravated Assault
Burglary
Larceny-theft (**except motor vehicle theft**)
Motor Vehicle Theft
Arson

Source: FBI UCR Handbook, Revised 2004

FBI – Uniform Crime Reporting Part II Offenses

Law enforcement agencies report to the FBI only arrest data involving the Part II crimes:

- Other Assaults
- Forgery and Counterfeiting
- Fraud
- Embezzlement
- Stolen Property: Buying, Receiving, Possessing
- Vandalism
- Weapons: Carrying, Possessing, etc.
- Prostitution and Commercialized Vice
- Sex Offenses
- Drug Abuse Violations
- Gambling
- Offenses Against the Family and Children
- Driving Under the Influence
- *Liquor Laws*
- *Drunkenness*
- *Disorderly Conduct*
- Vagrancy
- All Other Offenses
- Suspicion
- Curfew and Loitering Laws—(Persons under 18)
- Runaways—(Persons under 18)

Source: FBI UCR Handbook, Revised
2004

Part I FBI Crimes – Mission Beach 2000-2006

San Diego Police Department, Crime Analysis Unit

Crime Type	2001	2002	2003	2004	2005	2006	00-06
Murder	0	0	2	0	0	0	N/A
Rape	5	3	5	13	3	6	20.00%
Robbery	19	17	17	15	16	28	47.37%
Aggravated Assault	67	56	63	45	59	48	-28.36%
Violent Crime Total	91	76	87	73	78	82	-9.89%
Residential Burglary	104	76	85	68	79	57	-45.19%
Commercial Burglary	27	14	24	9	21	24	-11.11%
Larceny	455	332	295	370	326	386	-15.16%
Motor Vehicle Theft	79	78	142	100	117	112	41.77%
Property Crime Total	665	500	546	547	543	579	-12.93%
Crime Index Total	756	576	633	620	621	661	-12.57%
Car Prowls	219	143	136	185	171	248	13.24%

Part I FBI Crimes – Pacific Beach 2000-2006

San Diego Police Department, Crime Analysis Unit

Crime Type	2001	2002	2003	2004	2005	2006	00-06
Murder	3	1	1	2	1	1	-66.67%
Rape	20	13	20	19	22	27	35.00%
Robbery	59	74	50	51	80	82	38.98%
Aggravated Assault	213	174	184	168	170	162	-23.94%
Violent Crime Total	295	262	255	240	273	272	-7.80%
Residential Burglary	285	252	330	364	311	240	-15.79%
Commercial Burglary	97	110	128	74	94	79	-18.56%
Larceny	1,426	1,330	1,342	1,529	1,632	1,163	-18.44%
Motor Vehicle Theft	407	378	581	581	604	518	27.27%
Property Crime Total	2,215	2,070	2,381	2,548	2,641	2,000	-9.71%
Crime Index Total	2,510	2,332	2,636	2,788	2,914	2,272	-9.48%
Car Prowls	792	648	672	924	1,136	710	-10.35%

Part I FBI Crimes – Mission Bay Park 2000-2006

San Diego Police Department, Crime Analysis Unit

Crime Type	2001	2002	2003	2004	2005	2006	00-06
Murder	0	1	1	1	1	0	N/A
Rape	0	1	0	5	0	2	N/A
Robbery	2	5	3	5	5	5	150.00%
Aggravated Assault	40	51	30	29	11	31	-22.50%
Violent Crime Total	42	58	34	40	17	38	-9.52%
Residential Burglary	29	28	24	17	17	14	-51.72%
Commercial Burglary	31	30	19	33	22	36	16.13%
Larceny	227	244	220	242	244	227	0.00%
Motor Vehicle Theft	52	54	44	51	46	57	9.62%
Property Crime Total	339	356	307	343	329	334	-1.47%
Crime Index Total	381	414	341	383	346	372	-2.36%
Car Prowls	102	112	98	127	135	133	30.39%

Part I FBI Crimes – Ocean Beach 2000-2006

San Diego Police Department, Crime Analysis Unit

Crime Type	2001	2002	2003	2004	2005	2006	00-06
Murder	0	2	1	0	0	1	N/A
Rape	10	7	4	3	7	6	-40.00%
Robbery	20	10	18	10	16	22	10.00%
Aggravated Assault	85	86	95	56	72	48	-43.53%
Violent Crime Total	115	105	118	69	95	77	-33.04%
Residential Burglary	85	76	55	82	79	52	-38.82%
Commercial Burglary	17	14	31	15	20	22	29.41%
Larceny	308	307	315	300	271	277	-10.06%
Motor Vehicle Theft	158	103	151	231	185	160	1.27%
Property Crime Total	568	500	552	628	555	511	-10.04%
Crime Index Total	683	605	670	697	650	588	-13.91%
Car Prowls	141	125	129	155	131	136	-3.55%

Actual Number of Crimes - Beaches 2000-2006

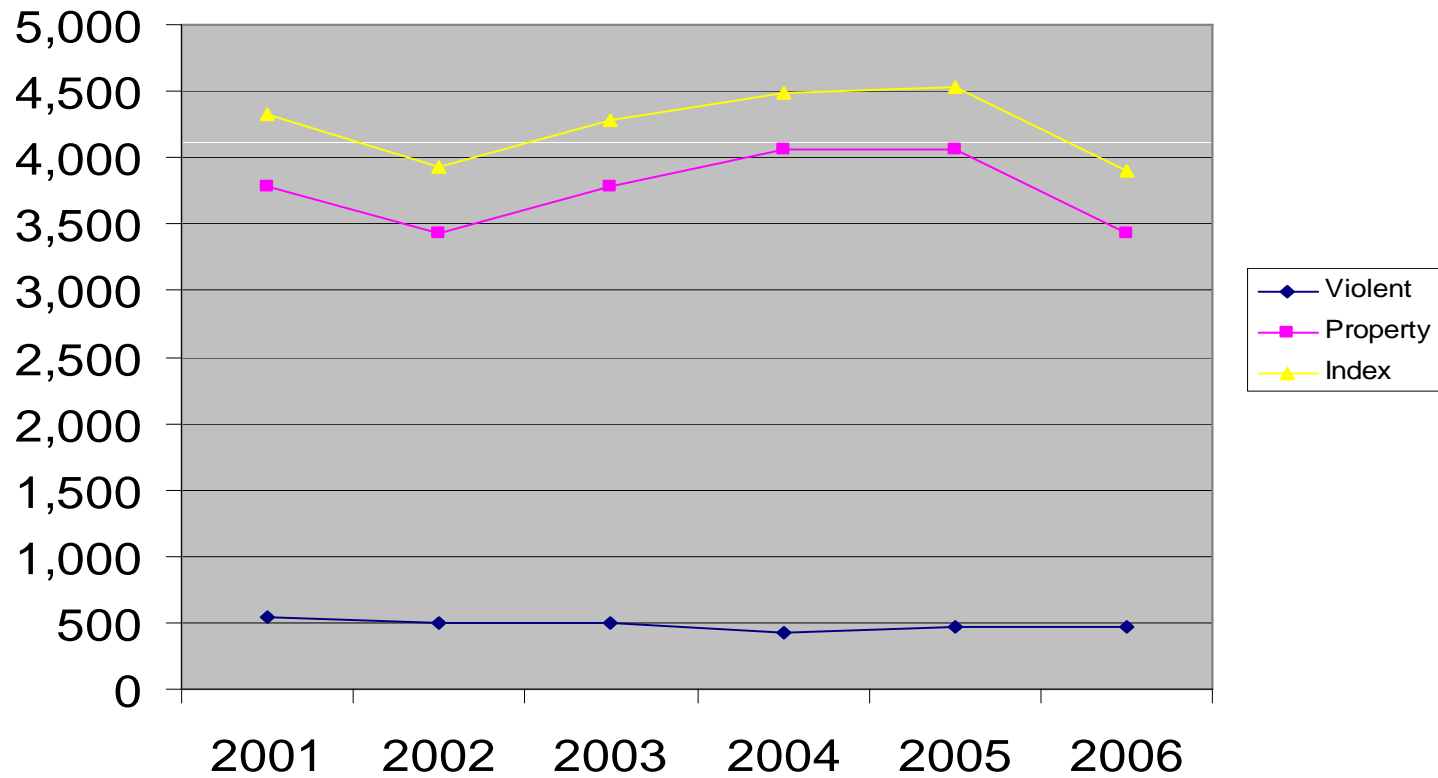
San Diego Police Department, Crime Analysis Unit

	TOTAL
Murder	19
Rape	201
Robbery	629
Aggravated Assault	2,043
Violent Crime Total	2,892
Residential Burglary	2,809
Commercial Burglary	991
Larceny	13,768
Motor Vehicle Theft	4,989
Property Crime Total	22,557
Crime Index Total	25,449
Car Prowls	7,508

Actual Number of Crimes - Beaches 2000-2006

San Diego Police Department, Crime Analysis Unit

BY INDEX TYPE



Alcohol Arrests and Cites, % Citywide Average, 2005 - Top 10 Beats

NEIGHBORHOOD	TOTAL	% OF CITY
PACIFIC BEACH	2812	15.13%
MISSION BEACH	1828	9.84%
OCEAN BEACH	1171	6.30%
EAST VILLAGE	832	4.48%
CORE-COLUMBIA	566	3.05%
MISSION VALLEY EAST	472	2.54%
LOGAN HEIGHTS	465	2.50%
HILLCREST	457	2.46%
BORDER	447	2.41%
MISSION BAY PARK	414	2.23%

Alcohol Detentions, % Citywide Average, 2005 - Top 8 Beats

<u>Location</u>	<u>Number</u>	<u>% Citywide</u>
Border	978	18.8%
Pacific Beach	865	16.6%
Mission Beach	459	8.8%
Mission Valley East	301	5.8%
Gaslamp	262	5.0%
Core Columbia	185	3.5%
East Village	171	3.3%
Ocean Beach	120	2.3%

Sample of Alcohol Arrests and Cites, Top 10 Beats, 2005

<i>Charge</i>	<i>PB</i>	<i>MB</i>	<i>OB</i>	<i>E. Vill.</i>	<i>Col.</i>	<i>MV</i>	<i>LH</i>	<i>Hill.</i>	<i>Brdr.</i>	<i>MB</i>	<i>Total</i>
Open Cont.	1292	1191	547	257	111	14	154	133	10	227	3936
647f Detox	357	55	191	209	180	166	80	153	119	17	1527
DUI	533	93	84	165	166	130	90	63	99	41	1464
MIP	320	398	58	10	2	88	6		4	97	983
OC CityLt	77	24	123	103	42	21	73	48	1	4	516
647f Jail	78	16	22	21	31	5	9	28	16	4	230
Minor .05+	16	3	1	4	3	2	1	3	170	2	205
OC Veh.	13	5	10	10	5	14	12	3		3	75

San Diego Police Department – 2005

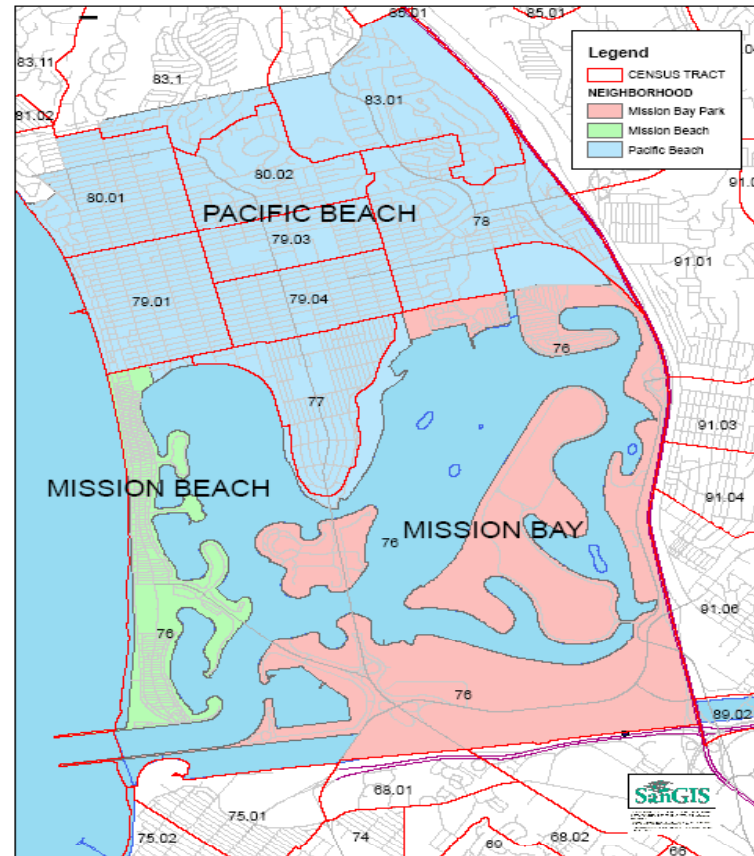
Alcohol Arrests and Cites

by Federal Census Tract

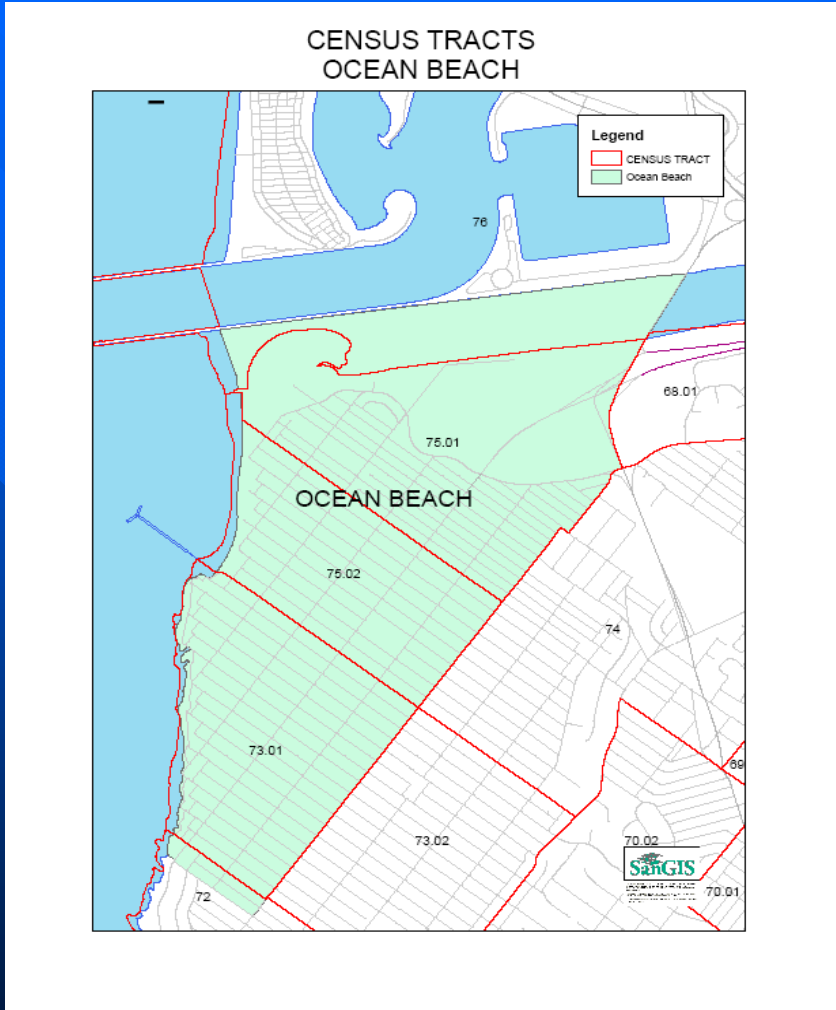
San Diego Police Department, Crime Analysis Unit

Census Tracts – Pacific Beach, Mission Beach, Mission Bay Park

CENSUS TRACTS
PACIFIC BEACH, MISSION BEACH AND MISSION BAY PARK



Census Tracts – Ocean Beach



2000 Census Tract	Alcohol Violations	Tract Total as % of Tract Average
007600 Mission Beach/Mission Bay Park	1977	3400.8%
007901 Pacific Beach	1537	2643.9%
005300 Gaslamp/Core-Columbia/Horton Plaza	801	1377.9%
007502 Ocean Beach	654	1125.0%
005200 East Village/Core-Columbia	512	880.7%
007501 Ocean Beach	447	768.9%
010015 San Ysidro/Otay Mesa	445	765.5%
006500 Midway/Old Town/Mission Hills	436	750.0%
005100 Barrio Logan	416	715.6%
009304 Mission Valley East	411	707.0%
005000 Barrio Logan	264	454.1%
007700 Pacific Beach	259	445.5%
007904 Pacific Beach	257	442.1%
005600 Cortez/Balboa Park/Golden Hill	236	406.0%
008511 Kearny Mesa	218	375.0%
005400 East Village/Core-Columbia/Marina	205	352.6%
007903 Pacific Beach	202	347.5%
000400 Hillcrest	189	325.1%
007800 Pacific Beach	183	314.8%

Tract Average

Total Alcohol Violations

17,498

Total Number of Tracts

301

Tract Average

58.13

Total Alcohol Violations	17,498
Total Number of Tracts	301
Tract Average	58.13

San Diego Police Department – 2005

ABC Summary – Part I Crimes and Part II Arrests

by Federal Census Tract

San Diego Police Department, Crime Analysis Unit

2000 Census Tract	Crimes and Arrests	Tract Total as % of Tract Average	
005300	Gaslamp/Core-Columbia/Horton Plaza	2,493	859.2%
005100	Barrio Logan/East Village	2,019	695.9%
009304	Mission Valley East	1,911	658.6%
006500	Midway/Old Town/Mission Hills	1,606	553.5%
007901	Pacific Beach	1,596	550.1%
005200	East Village/Core-Columbia	1,540	530.8%
007600	Mission Beach/Mission Bay Park	1,531	527.7%
010015	San Ysidro/Otay Mesa	1,435	494.6%
008511	Kearny Mesa	1,333	459.4%
008902	Mission Valley West	1,222	421.2%
005600	Cortez/Balboa Park/Golden Hill	1,017	350.5%
001300	North Park	901	310.5%
010009	San Ysidro	838	288.8%
005400	East Village/Core-Columbia/Marina	827	285.0%
002302	Teralta East	800	275.7%
003302	Lincoln Park	780	268.8%
010014	Otay Mesa/Ocean Crest	739	254.7%
003902	Barrio Logan/Logan Heights	732	252.3%
002702	El Cerrito	728	250.9%
002703	Darnall/Oak Park	724	249.5%
007800	Pacific Beach	684	235.7%

Tract Average

Total Crimes and Arrests

87,332

Total Number of Tracts

301

Tract Average

290.14



Total Crimes and Arrests	87,332
Total Number of Tracts	301
Tract Average	290.14

**Crime Rates per 1,000 Population
Selected Beach Neighborhoods and Related Census Tracts
2005**

<i>CT</i>	<i>Rape</i>	<i>Robb.</i>	<i>Agg. Aslt.</i>	<i>Viol. Crimes</i>	<i>Res. Burg</i>	<i>Theft</i>	<i>Veh. Theft</i>	<i>Prop. Crime</i>	<i>Index Crime</i>	<i>Car Prowls</i>
<i>73.01 OB</i>	.19	.95	.95	2.28	3.05	13.71	7.81	24.75	27.03	10.66
<i>75.01 OB</i>	.00	2.34	6.08	8.42	5.38	21.76	15.21	44.00	52.42	10.77
<i>75.02 OB</i>	1.53	2.14	5.19	8.86	3.97	33.29	15.88	57.42	66.28	10.08
<i>76.00 MB, MBP</i>	1.24	5.29	11.97	18.50	11.20	96.10	26.28	143.06	161.56	59.71
<i>77.00 PB</i>	.78	1.04	2.08	3.90	6.25	23.42	10.54	40.99	44.89	16.79
<i>78.00 PB</i>	.00	3.20	4.00	7.20	6.08	30.72	9.12	48.65	55.85	19.68
<i>City Avg.</i>	.29	1.43	3.30	5.06	3.53	18.85	10.83	35.39	40.45	10.60

Crime Rates per 1,000 Population Selected Beach Neighborhoods and Related Census Tracts 2005

<i>CT</i>	<i>Rape</i>	<i>Robb.</i>	<i>Agg. Aslt.</i>	<i>Viol. Crimes</i>	<i>Res. Burg</i>	<i>Theft</i>	<i>Veh. Theft</i>	<i>Prop. Crime</i>	<i>Index Crime</i>	<i>Car Prowls</i>
79.01 PB	2.04	4.64	15.01	21.87	7.04	56.15	24.65	92.85	114.71	27.06
79.03 PB	.00	2.86	1.76	4.61	5.71	28.99	10.76	47.65	52.26	13.18
79.04 PB	.66	1.65	3.46	5.76	5.27	21.74	14.33	42.65	48.42	13.83
80.01 PB	.28	.85	.99	2.13	6.11	26.28	11.51	44.75	46.88	19.61
80.02 PB	.00	.00	1.93	1.93	4.63	12.35	6.17	23.92	25.85	10.80
83.01 PB	.30	.00	.00	.30	6.64	11.16	2.72	20.52	20.82	8.15
City Avg	.29	1.43	3.30	5.06	3.53	18.85	10.83	35.39	40.45	10.60

Contact Information

Northern Division

Lt. Brian Ahearn

(858) 552-1706

gahearn@pd.sandiego.gov

Western Division (Ocean Beach)

Administration

(619) 692-4800



Questions?



Appendix

Lifeguard Crowd Counts

Northern Division Beaches/Bays

2004	21,549,252
------	------------

2005	20,620,020
------	------------

Source: City of San Diego Lifeguard Service

Party and Noise Calls for Service, 2000-2005

Call Type / Neighborhood	2000	2001	2002	2003	2004	2005
Party Calls for Service						
Mission Beach	34	460	467	404	322	340
Pacific Beach	109	1,240	1,120	1,066	1,221	1,115
Mission Bay Park	0	0	0	0	0	0
Ocean Beach	30	365	271	354	326	347
Citywide	736	7,634	7,166	7,044	7,277	7,433

Party and Noise Calls for Service, 2000-2005

Noise Calls for Service	2000	2001	2002	2003	2004	2005
Mission Beach	993	350	326	300	224	192
Pacific Beach	2,444	1,408	1,244	1,188	1,137	1,045
Mission Bay Park	0	0	0	0	0	0
Ocean Beach	757	438	447	398	443	417
Citywide	24,475	15,846	15,327	14,084	14,336	14,073

Cost Recovery

51.1004 SDMC – Police Services at Large Events Requiring More Than One Response

When a large party, gathering or event occurs on private property and a police officer at the scene determines that there is a threat to the public peace, health, safety or general welfare, the person(s) responsible for the event will be held liable for the cost of providing police services for the special security assignment during a second response by the police after the first warning, to control the threat to the public peace, health, safety or general welfare.

The return call, or second call, may also result in the arrest and/or citation of violators of the state penal code or other local regulations.

Actual Number of Crimes - Beaches

2000-2006

San Diego Police Department, Crime Analysis Unit

	VIOLENT CRIME	PROPERTY CRIME	INDEX TOTAL
MISSION BEACH	487	3,380	3,867
PACIFIC BEACH	1,597	13,855	15,452
MISSION BAY PARK	229	2,008	2,237
OCEAN BEACH	579	3,314	3,893
INDEX TOTAL	2,892	22,557	25,449

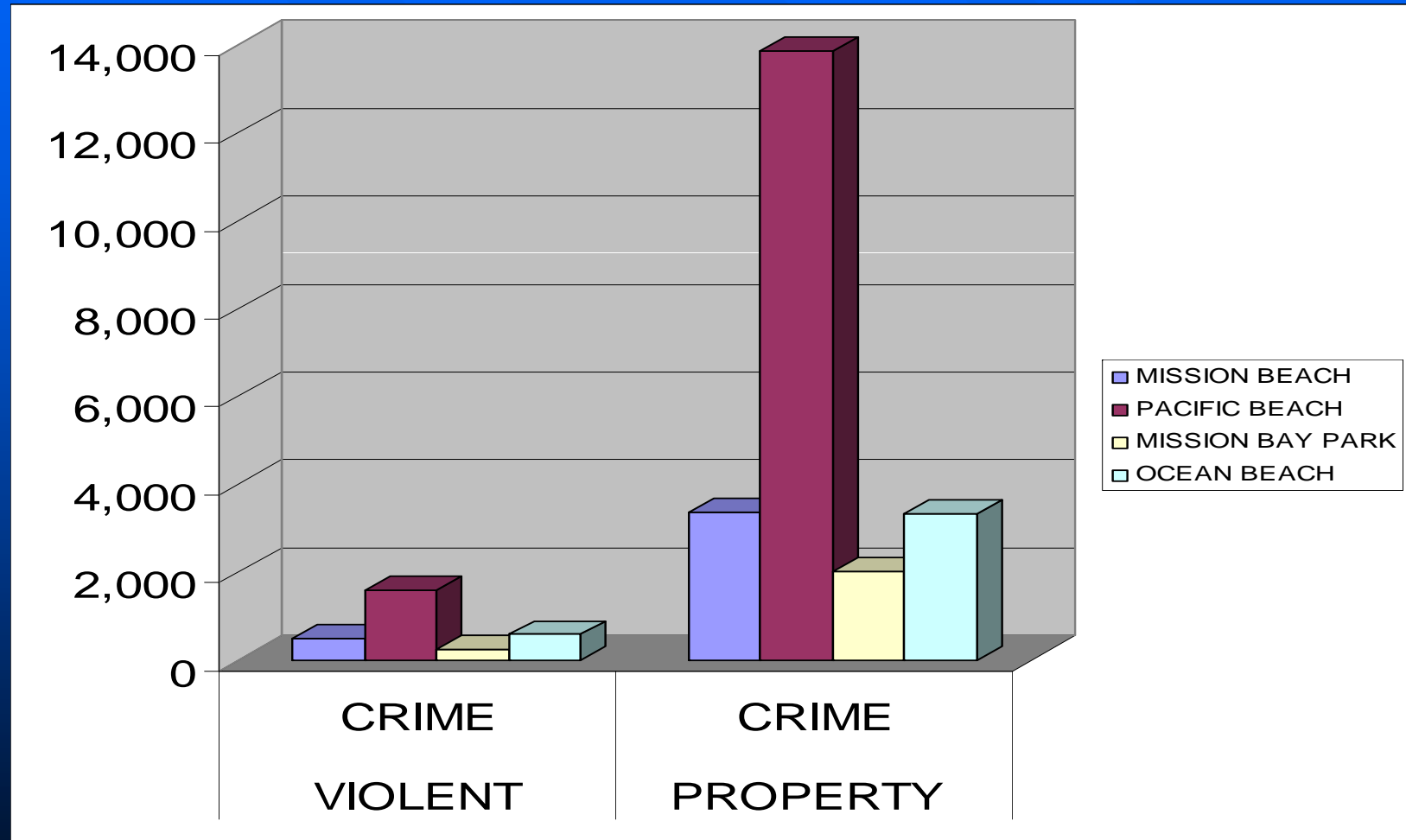
Actual Number of Crimes - Beaches 2000-2006

San Diego Police Department, Crime Analysis Unit

	2001	2002	2003	2004	2005	2006	TOTAL
Violent	543	501	494	422	463	469	2,892
Property	3,787	3,426	3,786	4,066	4,068	3,424	22,557
Index	4,330	3,927	4,280	4,488	4,531	3,893	25,449

Actual Number of Crimes - Beaches 2000-2006

San Diego Police Department, Crime Analysis Unit



Drunk Driving Fatalities

Northern Division Beach Communities

January 1, 2000 - July 16, 2006

Community	Ped	Vehicle	MC	Bicycle	Total
Mission Beach		2	1		3
Pacific Beach	2	1	2	1	6
Miss. Bay Park	1	1	1	1	4
La Jolla	3	2			5

Part I FBI Crimes - Beaches 2000-2006

San Diego Police Department, Crime Analysis Unit

Crime Type	2001	2002	2003	2004	2005	2006	00-06
Murder	3	4	5	3	2	2	N/A
Rape	35	24	29	40	32	41	17.14%
Robbery	100	106	88	81	117	137	37.00%
Aggravated Assault	405	367	372	298	312	289	-28.64%
Violent Crime Total	543	501	494	422	463	469	-13.63%
Residential Burglary	503	432	494	531	486	363	-27.83%
Commercial Burglary	172	168	202	131	157	161	-6.40%
Larceny	2,416	2,213	2,172	2,441	2,473	2,053	-15.02%
Motor Vehicle Theft	696	613	918	963	952	847	21.70%
Property Crime Total	3,787	3,426	3,786	4,066	4,068	3,424	-9.59%
Crime Index Total	4,330	3,927	4,280	4,488	4,531	3,893	-10.09%
Car Prowls	1,254	1,028	1,035	1,391	1,573	1,227	-2.15%

Crime Rates per 1,000 Population Selected Beach Neighborhoods 2005

<i>Beat</i>	<i>Rape</i>	<i>Robb.</i>	<i>Agg. Aslt.</i>	<i>Viol. Crimes</i>	<i>Res. Burg</i>	<i>Theft</i>	<i>Veh. Theft</i>	<i>Prop. Crime</i>	<i>Index Crime</i>	<i>Car Prowls</i>
MB	1.12	5.23	8.96	15.31	10.64	72.07	20.91	108.10	123.41	46.30
PB	.65	1.97	3.89	6.54	5.77	27.94	12.45	48.05	54.59	17.06
MBP	2.28	5.69	35.27	43.23	15.93	258.25	64.85	379.98	423.21	151.30
OB	.47	1.71	3.72	5.97	4.03	21.47	12.40	39.61	45.58	10.54
City Avg	.29	1.43	3.30	5.06	3.53	18.85	10.83	35.39	40.45	10.60

Reporting Crime

FBI Uniform Crime Report (UCR)

- ✓ FBI assumed management of the UCR program in 1930
- ✓ Considered the most reliable source of crime reporting throughout the country
- ✓ Provides all federal, state, local and tribal agencies with a uniform format in which to report crime
- ✓ Agencies report Part I and Part II crimes every month
- ✓ FBI generates a bi-annual report
- ✓ Is the standard adopted and utilized by the San Diego Police Department
- ✓ You can read the UCR Handbook at:
<http://www.fbi.gov/ucr/handbook/ucrhandbook04.pdf>

Alcohol Related Crime Reported in UCR

Part I Crimes

No Part I offenses include alcohol in the elements of the crime

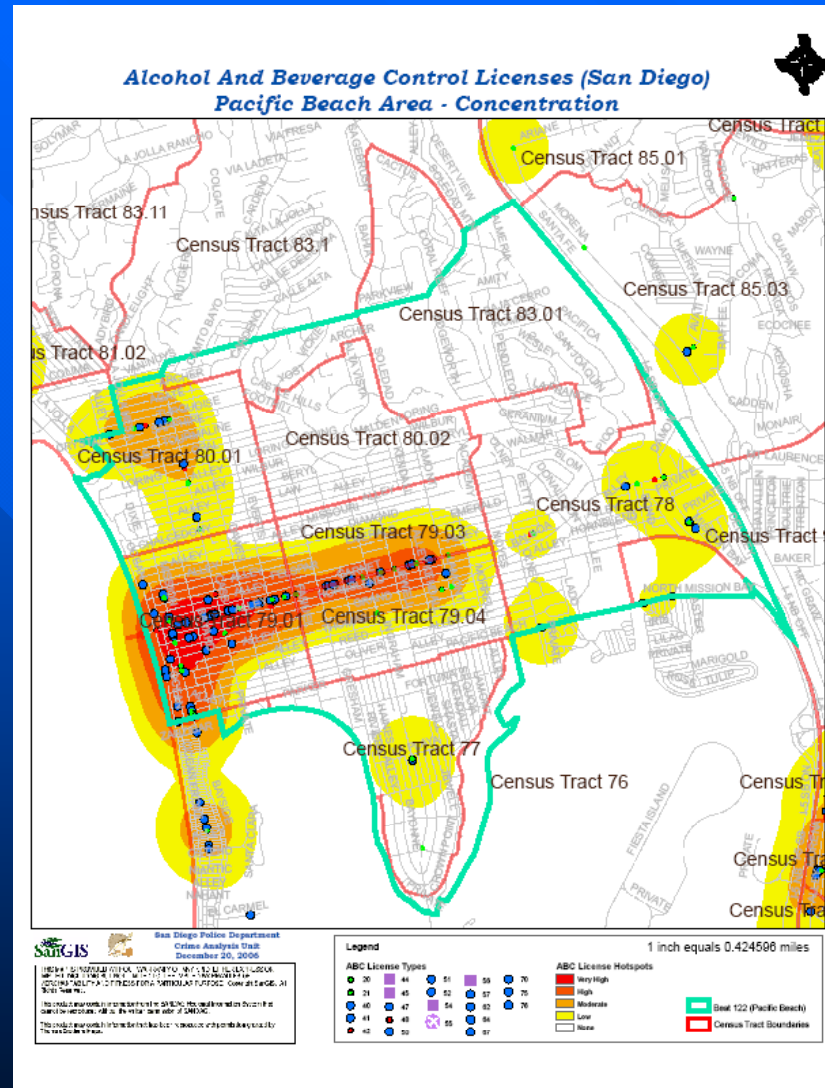
Part II Crimes

Driving Under the Influence

Liquor Laws

Drunkenness

ABC License Concentration - Pacific Beach



ABC License Concentration - Ocean Beach

